



489m² Office To Let

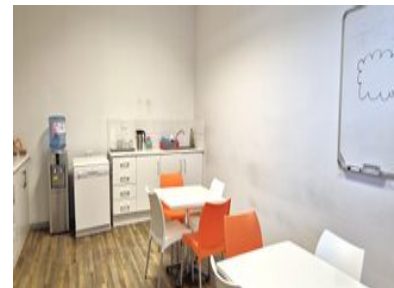
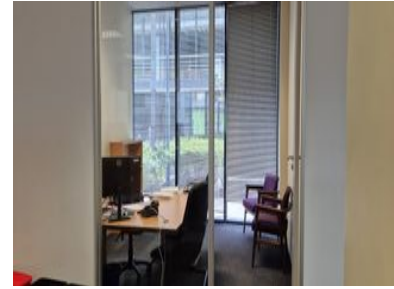
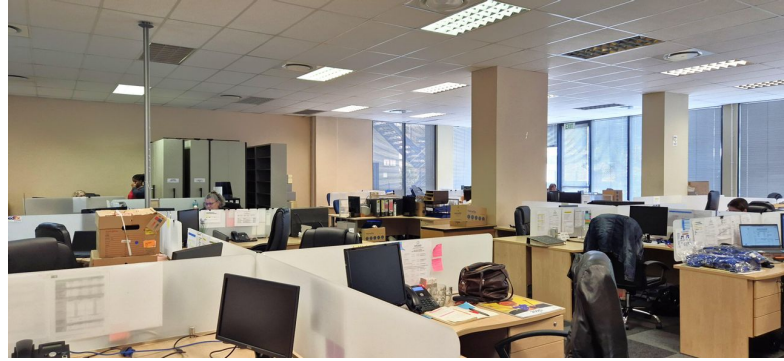
1 Searle Street, Woodstock

Gross rental **R83130 excl. VAT**

This ground-floor spacious and bright office has a reception, open-plan work-area, a series of private offices, and a larger kitchen with a canteen space.

Situated on Searle Street in Woodstock, Boulevard Office Park is a stylish and tranquil business setting, with superb infrastructure, 24-hour security, plenty of paid client parking, and plenty of conveniences in the area - including a Spar, coffee shops, and restaurants within the park.

(Parking bays - R1500/Bay excl. VAT)



Rate Per m ² excl. VAT	R170 / m ²
Floor Size	489m ²
Availability	Immediately

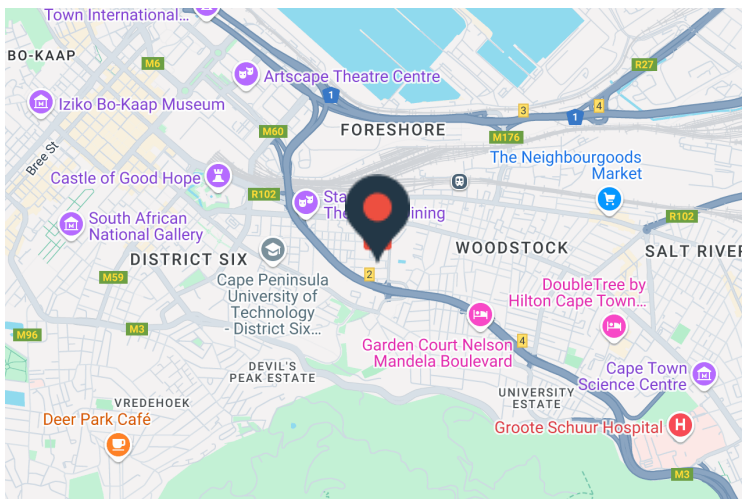
Security	Yes
Air Conditioning	Yes
Type	Office
Title	None
Zoning	Commercial

CONTACT US



Daniel Bernberg

- (021) 204 7218
- 0827829840
- daniel@portcommercial.com
- Buitengracht Centre
125 Buitengracht Street
Cape Town



Disclaimer: Whilst every effort has been made to ensure the accuracy of the information contained herein, no liability can be accepted for any errors or omissions and the Tenant or Buyer is advised to verify the facts prior to making any offer to lease or purchase.