

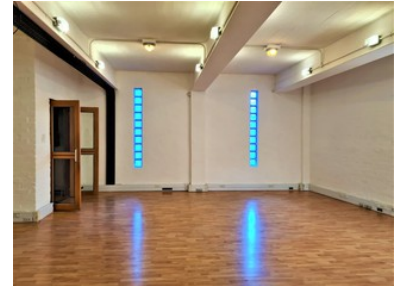
## 210m<sup>2</sup> Office To Let

32 Jamieson Street, Gardens

Gross rental **R42000 excl. VAT**

This spacious ground floor premises has everything a creative business could want, offering various work environments, a reception, a boardroom, kitchenette, and private bathrooms. The space is beautifully finished, and ready to move into.

The Planet Art is a unique, well-managed, lifestyle-oriented building equipped with all the features and additional services a business could need or want. FEATURES INCLUDE: 24-hour secure biometric access control, High-speed internet services and connectivity, cleaning services, and an in-house coffee shop, and more!



Rate Per m <sup>2</sup> excl. VAT	R200 / m <sup>2</sup>
Floor Size	210m <sup>2</sup>
Availability	Immediately

Security	Yes
Air Conditioning	Yes
Type	Office
Title	None
Zoning	Commercial



## CONTACT US



**Daniel Bernberg**

- (021) 204 7218
- 0827829840
- daniel@portcommercial.com
- Buitengracht Centre  
125 Buitengracht Street  
Cape Town

Disclaimer: Whilst every effort has been made to ensure the accuracy of the information contained herein, no liability can be accepted for any errors or omissions and the Tenant or Buyer is advised to verify the facts prior to making any offer to lease or purchase.