



## 176m<sup>2</sup> Office To Let

2 Dockrail Rd, Foreshore

Gross rental **R31328 excl. VAT**

Two neighbouring offices 88sqm (available separately at the same rate) are now available as one in this prestigious, stylish, and peaceful building.  
(Secure parking bays available at R1500/bay excl. VAT)

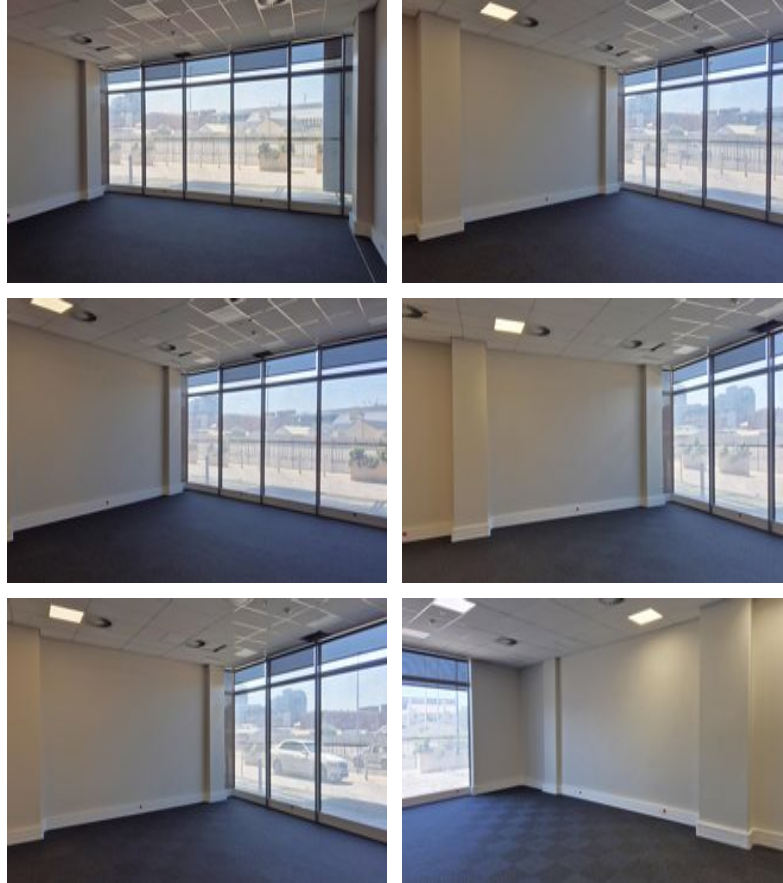
The Yacht Club is located in the Roggebaai Canal Precinct, with Table Mountain as a stunning backdrop. It's surrounded by calm waterways and the famous red water taxis, offering amazing views of the harbour and mountains.

Getting there is easy, with access by car, bus, bike, shuttle, taxi, or water taxi. A short walk will take you to the trendy Silo District and the lively V&A Waterfront, where you can enjoy restaurants, shops, banks, gyms, museums, and various attractions.

Move-in-ready office suites offer flexible space to suit any business, with secure undercover parking and advanced security systems in place. The building features high-speed fiber-optic internet, backup power, and convenient shower facilities....

Rate Per m <sup>2</sup> excl. VAT	R178 / m <sup>2</sup>
Floor Size	176m <sup>2</sup>
Availability	Immediately

Security	Yes
Air Conditioning	Yes
Type	Office
Title	None
Zoning	Commercial



## CONTACT US



**Daniel Bernberg**

-  (021) 204 7218
-  0827829840
-  daniel@portcommercial.com
-  Buitengracht Centre  
125 Buitengracht Street  
Cape Town

Disclaimer: Whilst every effort has been made to ensure the accuracy of the information contained herein, no liability can be accepted for any errors or omissions and the Tenant or Buyer is advised to verify the facts prior to making any offer to lease or purchase.

