



PORT

COMMERCIAL PROPERTIES



264m² Office To Let

2 Dockrail Rd, Foreshore

Gross rental **R46992 excl. VAT**

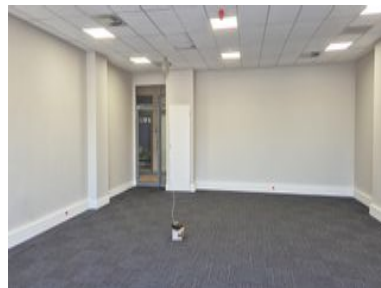
Three intersecting offices of 88sqm (available separately at the same rate) are now available in this prestigious, stylish, and peaceful building.

(Secure parking bays available at R1500/bay excl. VAT)

The Yacht Club is located in the Roggebaai Canal Precinct, with Table Mountain as a stunning backdrop. It's surrounded by calm waterways and the famous red water taxis, offering amazing views of the harbour and mountains.

Getting there is easy, with access by car, bus, bike, shuttle, taxi, or water taxi. A short walk will take you to the trendy Silo District and the lively V&A Waterfront, where you can enjoy restaurants, shops, banks, gyms, museums, and various attractions.

Move-in-ready office suites offer flexible space to suit any business, with secure undercover parking and advanced security systems in place. The building features high-speed fiber-optic internet, backup power, and convenient shower facilities. Offices...





Rate Per m ² excl. VAT	R178 / m ²
Floor Size	264m ²
Availability	Immediately

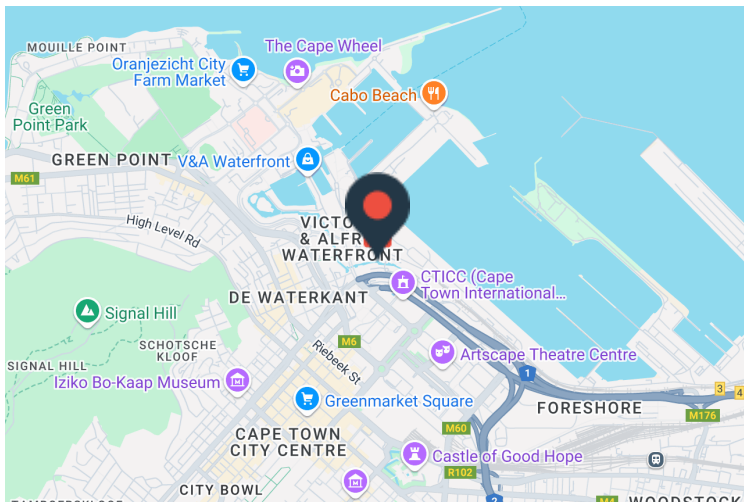
Security	Yes
Air Conditioning	Yes
Type	Office
Title	None
Zoning	Commercial

CONTACT US

Daniel Bernberg



-  (021) 204 7218
-  0827829840
-  daniel@portcommercial.com
-  Buitengracht Centre
125 Buitengracht Street
Cape Town



Disclaimer: Whilst every effort has been made to ensure the accuracy of the information contained herein, no liability can be accepted for any errors or omissions and the Tenant or Buyer is advised to verify the facts prior to making any offer to lease or purchase.